

FOR LEASE

Birchwood Medical Center
520-A Birchwood Avenue



- Suite 520-A: 1,188 SF
- Class A medical building complex
- Great location near St. Joseph Hospital
- Easy freeway access
- Near other medical services
- Ample parking



Sales, Leasing, Management
Office, Retail and Industrial Properties

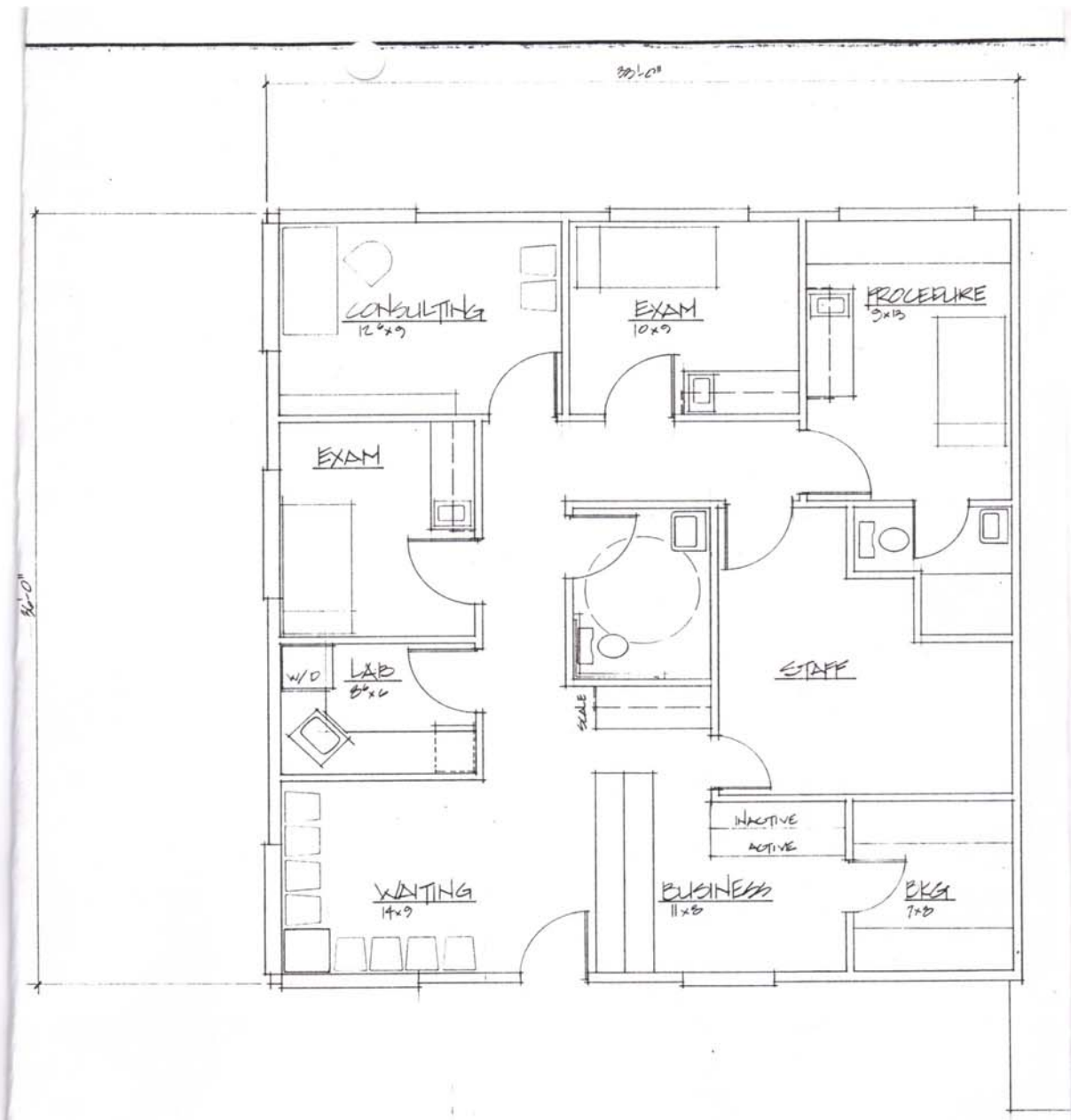
114 W Magnolia Street, Suite 302, Bellingham, WA 98225

For information contact:

Jim Bjerke

(360) 671-4200 x 101

Jim@pacificcontinentalrealty.com



FLOOR PLAN
1,188 SF 1/4" = 1'-0"