

FOR LEASE

1316 King Street, Bellingham, WA



Small Office With Easy On/Off to I-5

- ◆ Located just off the Lakeway exit on I-5 . Ample shared parking with nicely landscaped and cared for property.
- ◆ Space is on the ground level with window (natural light) access on the south and west corners of the space.
- ◆ Space has a simple floor plan with two enclosed offices, both with windows that open to the exterior.
- ◆ Reception area and room for storage and workstation, along with a private restroom. See floor plan.
- ◆ Signage on Street Pylon.



Sales, Leasing, Management
Office, Retail and Industrial Properties

114 W Magnolia Street, Suite 302, Bellingham, WA 98225

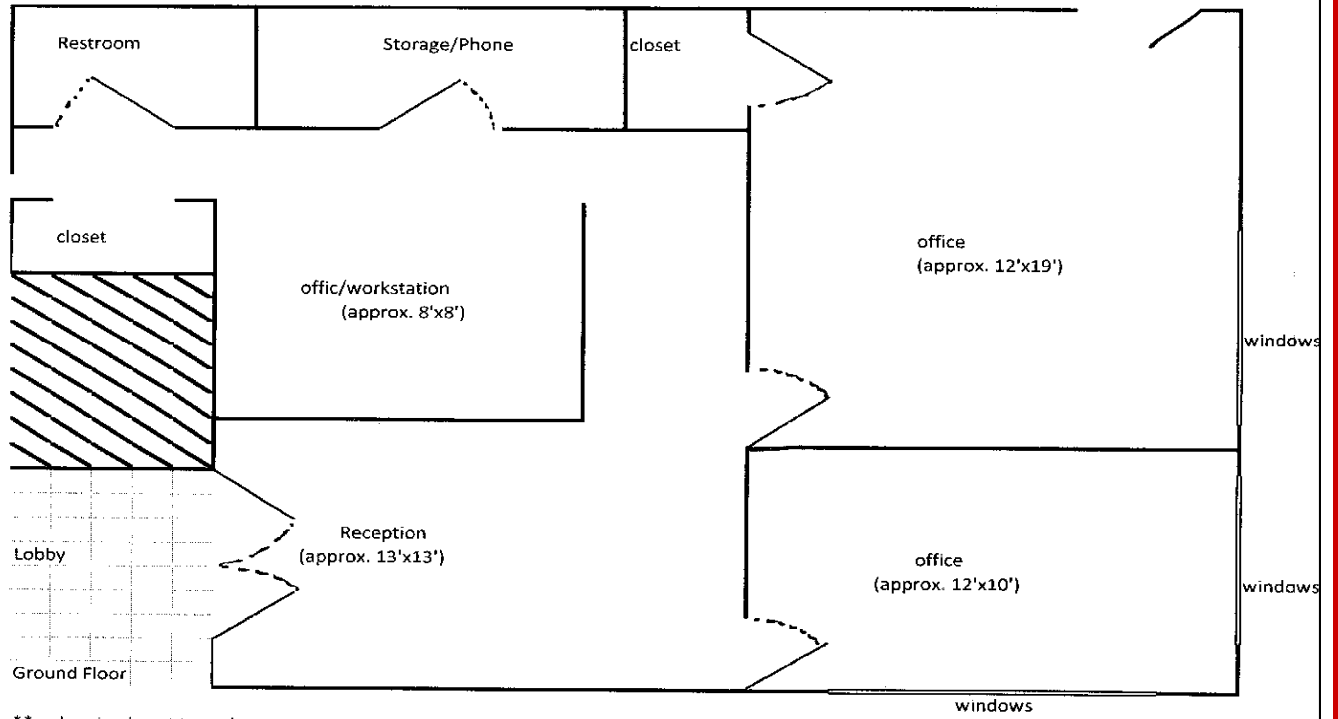
For information contact:

Tracy Carpenter

(360) 671-4200 x114

tracy@pacificcontinentalrealty.com

Suite 2



** drawing is not to scale