

700 E. Prospect Avenue, Ponca City, OK 74601

## Former Rex Building

### SALIENT DATA

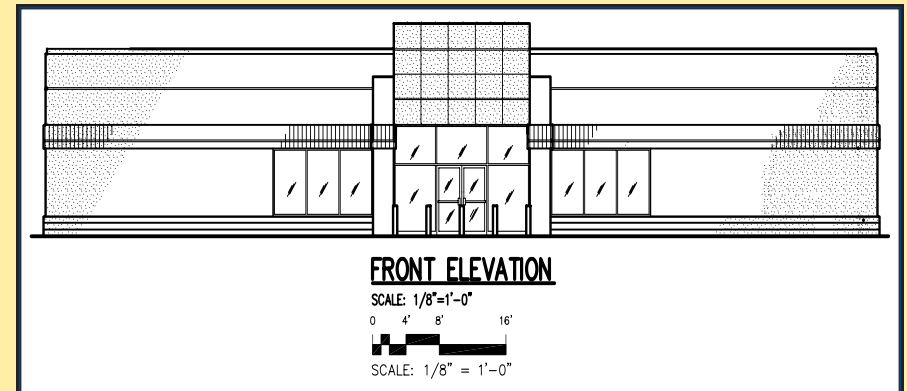
**Building Size:** +/- 12,000 square feet

**Land Size:** +/- 1.16 acres

**Rental Rate:** \$10.00 psf, NNN

**Sales Price:** \$1,200,000

**Available:** Immediately



For further information, contact:

Dan Elcan

Elcan and Associates, Inc.

251-460-0069

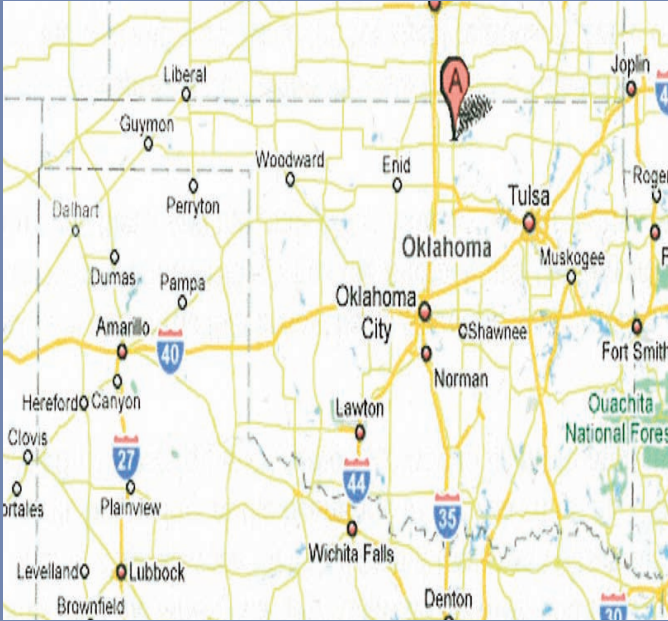
[delcan@elcaninc.com](mailto:delcan@elcaninc.com)



*Although Elcan and Associates, Inc. has obtained the information contained herein from sources it believes to be reliable, and believes the information to be correct, no representations or warranties, express or implied, are made as to the accuracy or reliability of this information. Any references to square footage or age are approximate only. The recipient bears sole responsibility for verification of the accuracy of the information contained herein and bears all risk for any inaccuracies. Elcan and Associates, Inc. shall have no liability or responsibility to any party for any loss or damage arising from reliance by any party on the information contained herein.*

700 E. Prospect Avenue, Ponca City, OK 74601

# Former Rex Building



## 2009 DEMOGRAPHICS

### Population

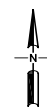
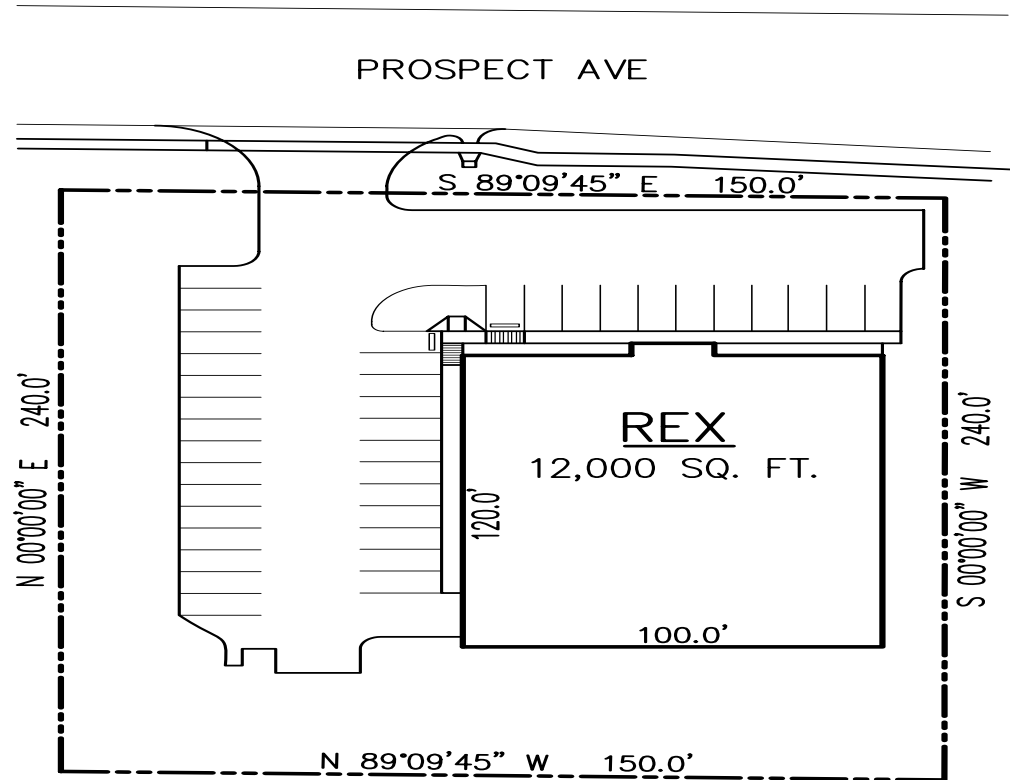
1 Mile	4,576
3 Mile	22,764
5 Mile	27,167

### Average Household Income

1 Mile	\$52,747
3 Mile	\$52,887
5 Mile	\$53,926

### Median Housing Value

1 Mile	\$76,600
3 Mile	\$70,920
5 Mil	\$71,908



**PONCA CITY, OKLAHOMA**

SCALE: 1"=20'

0 10' 20' 40'

SCALE: 1" = 20'

**For further information, contact:**

**Dan Elcan**

**Elcan and Associates, Inc.**

**251-460-0069**

**delcan@elcaninc.com**



**Elcan and Associates, INC.**  
INVESTMENTS

Although Elcan and Associates, Inc. has obtained the information contained herein from sources it believes to be reliable, and believes the information to be correct, no representations or warranties, express or implied, are made as to the accuracy or reliability of this information. Any references to square footage or age are approximate only. The recipient bears sole responsibility for verification of the accuracy of the information contained herein and bears all risk for any inaccuracies. Elcan and Associates, Inc. shall have no liability or responsibility to any party for any loss or damage arising from reliance by any party on the information contained herein.